

Square Footage Calculations

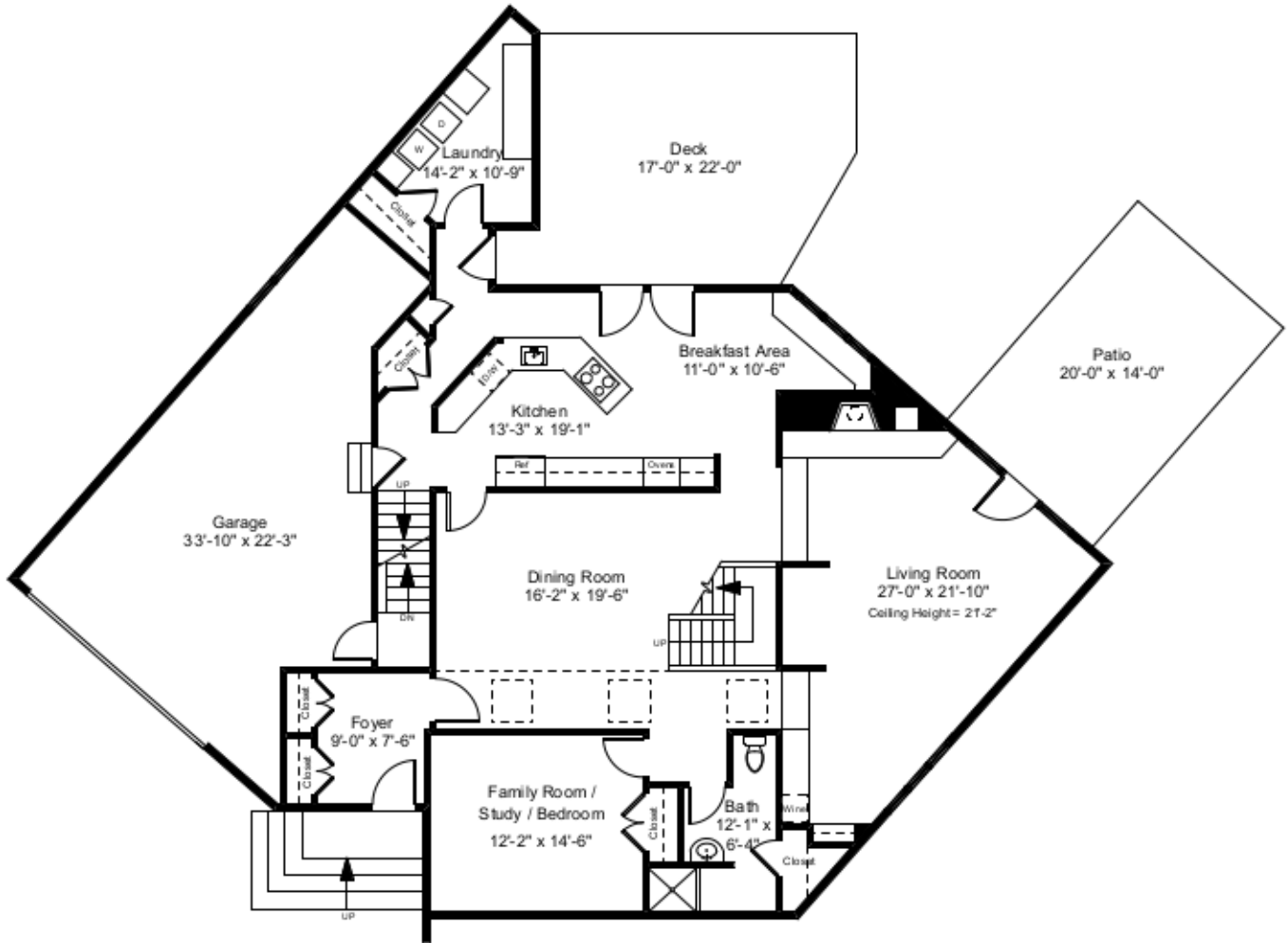
First Floor = 1,916 SF

Second Floor = 1,556 SF

Total Above Grade Living Area = 3,472 SF

Lower Level Finished Area = 580 SF

Total Gross Living Area = 4,052 SF



First Floor Plan
Ceiling Height = 9'-0"

27 Loring Avenue
Providence, RI 02906



1



Completed: August 2018

Note: Dimensions are not guaranteed and are provided for informational purposes only. Individual room dimensions are not used to calculate overall square footage.

NATIONAL
FLOOR PLANS
& PHOTOGRAPHY
(800) 328-0217